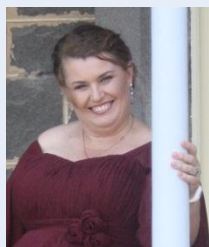


Welcome to our June newsletter

Welcome to the June newsletter for PPSS. We hope it finds you healthy, warm and ready for action.



As the new Programs Manager – Members and Support, I hope to meet with you soon at one of the PPSS events held to inform and support families, or perhaps in the Resource Centre at 135 Mt Alexander Road, Flemington when you come in to check out our library.

I will be attending **Journal Club** on June 7, 8:00 – 9:30pm, 11 Stanton Street, Collingwood. Journal Club will be discussing a very interesting topic – ‘How do our children cope with adolescence?’

On June 26 in the Melton Shire Community Rooms PPSS will be hosting a **kinship carers discussion** with representatives from Bapcare and Melton Shire. Please take this opportunity to have your voice heard regarding future support in response to the needs of kinship carers in the Melton area.

Why not also come along to our **Kinship Care Gathering** to be held on July 17, 10:00am – 2:00pm, Moonee Ponds Bowling Club, Queens Park, 808 Mt Alexander Rd, Moonee Ponds. We have a great day in the planning, including: a talk by Centrelink’s Victorian Grandparent Advisor about navigating the Centrelink payment system; ChildWise speaking on cybersafety; a fun and interactive laughter yoga session; and a great lunch with the Essendon Choir Weekday Singers. If you’re interested in coming along, give us a call and get your name down first!

If the thought of venturing out into the winter cold makes you retreat hastily and turn the heater up, I invite you to contact PPSS directly to talk through any family support needs you may have. We’re here to assist you to have the most positive family experience possible and continue to build a responsive service now and into the future.

Best wishes,
Erica Thompson
Programs Manager – Members and Support

Are you a grandparent?

Dr Rebekah Doley, Assistant Professor at Bond University, is conducting a study into the health and wellbeing of grandparents raising their grandchildren. The results will be used to highlight resourcing needs for this important group of carers in our community.

If you are currently caring for grandchildren on **either a full-time or part-time basis** and are willing to talk about your experiences, please contact Dr Doley on **07 5595 1344** or email **rdoley@bond.edu.au** Someone from the university will contact you to set up a suitable interview time for Dr Doley to telephone you. Participation should take approximately 60-90 minutes and will involve a brief interview and a short written questionnaire. A \$10 Coles gift card will be provided to each participant.

Your assistance in highlighting this important issue is appreciated.

PPSS Families Day



To coincide with National Families Week PPSS families gathered at Scienceworks on May 20 for the Wallace and Gromit exhibition. Photos are now posted on our website for you to view. This was an opportunity for families new and old to meet up, visit the exhibition and share a picnic lunch. Lindy Bok, PPSS Programs Manager – Training and Education, read from the *Great Book of Families*, a story about families being different. At the end of the day each child received a PPSS yoyo, much to the children's (and some parents') delight.



Support Groups and Community Events

■ Journal Club

June 7, 8.00 - 9.30pm, Collingwood Library, 11 Stanton St, Collingwood
Topic: How do our children cope with adolescence?

■ Adult Adoptee Network

Email: adultadopteenetwork@gmail.com

■ Northern "All Ways Playgroup"

Every second Thursday, 11.45am - 2.00pm
Call Dan Barron - 0422 050 689

■ Inner-South Forever Families Playgroup

Every second Thursday, 10.00am - 12.00pm,
Call Belinda - 0421 610 931

■ Western Suburbs Playgroup

Every second Friday, 10.00am
Call Linda - 0401 716 496

■ Regional Greater Western Playgroup for Grandparents and carers of young children

Every Monday, 10.00am - 11.30am
Call Lisa Trott-Kelly - 5366 7100

■ Kinship Care Session - Melton

June 26, 10.00am - 12.00pm
Melton Community Hall Complex, 232 High St Melton
Call PPSS - 9020 1833 or email - info@ppss.org.au

■ Kinship Care Gathering - Moonee Ponds

July 17, 10.00am - 2.00pm Moonee Ponds Bowling Club, Queens Park, 808 Mt Alexander Rd, Moonee Ponds
Call PPSS - 9020 1839 or email - info@ppss.org.au

Check our website for further information

www.ppss.org.au, Tel 03 9020 1833



Did you know that PPSS has a library?

of books on adoption, permanent care, kinship care, loss, trauma and a number of other subjects for you to borrow. Visit our website for a list of books

www.ppss.org.au/resources/library

Book review by Luke (age 10)

The story I read was *Twice Upon-a-Time*. The book was about adoption and told you how babies were made and adopted. It told you how you were fed, put into bed, crawled and walked. When I read it I felt so happy and sad at the same time. Mum told me a little about my birth parents. It was a great book to read and I think you should read it yourself.



See PPSS website for more information:

www.ppss.org.au/resources/library

We still have some **LET'S TALK Adoption and Permanent care and schools** publications for sale...



It is a terrific reference tool for your schools to have in their library \$18.00 incl P&H. Contact 9020 1833 to order your copy.

Gong Shi Project

共事

Working Together

Helen Lenga

PPSS invites you to an evening with Helen Lenga, adoptive mother and psychologist, to hear about her volunteer work with staff and carers in Chinese orphanages through the *Gong Shi Project*. Helen will talk about her decision to work in Chinese orphanages, how she first imagined this idea and her subsequent journey of making it a reality.

When Thursday June 28, 7.00 - 9.00pm

Where PPSS office, 135 Mt Alexander Rd, Flemington

RSVP Before June 27, E: info@ppss.org.au, T: 9020 1839.

Nibbles and refreshments will be served.

Gold coin donation on attendance to the *Gong Shi Project*, donated to support Helen's work.