

Our Future

Exciting news! We have been successful in our approaches to the State Government for some initial funding!

The Hon. Jenny Mikakos announced at our AGM, the granting of \$100,000 in seed funding to assist permanent carers and their children in 2015/16. Ongoing discussion with Department of Health and Human Services will continue with regards to future funding.

On a Federal level, no adoption support services were invited 'to submit' for available funds on offer. Lifeworks has received the tender for Victoria and we hope to work in partnership with them in the future.

PCA Families needs to secure funds to maintain and grow our high quality services to permanent care and adoptive families into the future. In our effort to achieve this, we have developed a Member Engagement Strategy, as well as a Fundraising Strategy both of which we hope will play an important part in developing a strong and sustainable future. We'll let you know more about this in the new year. Also note that we are advertising for a Philanthropy Manager. This person's main focus will be on growing and strengthening our stakeholder engagement and supporter base. If you know anyone who may be a strong candidate for this position, have any ideas, or would like to be involved in securing the future of this PCA Families, please contact me via phone (03) 9020 1833 or email: brenda@pcfamilies.org.au We are always happy to hear about members' experiences, and every story can help demonstrate the need for our organisation and the support we provide.

Now is a time to be mindful and thank the Board of Directors, staff and volunteers who have worked so hard this year. We have an amazing team of people who are dedicated to ensuring that support services are provided to our children and families. Job well done!

Please enjoy a safe and festive Christmas and New Year.

Kindest Regards,

Brenda Carmen

CEO

Philanthropy Manager (0.5 – 0.6 EFT / 19 – 22.8 hours per week)

PCA Families is seeking an experienced and successful fundraising professional to take responsibility for the development, implementation and management of philanthropic fundraising strategies and programs to deliver a sustainable funding base.

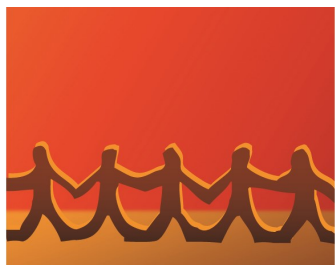
This newly created role reports directly to the CEO and will have an emphasis on developing and strengthening links with key external bodies, stakeholders and prospective donors to increase their awareness of PCA Families achievements and to deepen their engagement with the organisation and its goals.

The successful applicant will be a talented all rounder who has excellent people, management, communication and writing skills. They will also have strong experience in working in partnership with volunteer leadership - boards and committees.

The benefits: \$75 - \$85K per annum pro-rata (plus capacity for salary packaging).

To obtain a Position Description: please email: info@pcfamilies.org.au

For further information: please call Brenda Carmen, on 0487 014 564, or Serhat (Consultant) on 0400 264 332.



PCA Families AGM — with special guest, The Hon. Jenny Mikakos MP



On October 14, PCA Families hosted our 12th AGM at the Community room in the Edinburgh Gardens. We were fortunate to have The Hon. Jenny Mikakos launch our background paper: 'the potential of permanent care 2015' which was produced in conjunction with Centre for Excellence in Child and Family Welfare Inc. The paper looks at current policy, need for reform, international experience and formal recommendations. To obtain a copy, please call (03) 9020 1833 or you can find an electronic version at:

www.pcafamilies.org.au/uploaded-files

BACKGROUND PAPER:
THE POTENTIAL OF PERMANENT CARE 2015
Prepared by Permanent Care and Adoptive Families for Health, Child & Services



The AGM also provided the opportunity to ask the Minister first hand questions relating to adoption and permanent care. If you were unable to attend and would like to pose a question to the Minister, please send it to: info@pcafamilies.org.au and we will compile your questions for the Minister to respond.

Legal Forum for Carers: 'Permanent Care Reforms — Changes to the System'

The Legal Forum for carers 'permanent care reforms - changes to the system' was held on 15 October in Melbourne with the Hon. Minister Jenny Mikakos opening to 150 registered carers and parents.

Dan Barron, permanent care parent, provided the background to the legal project. Beth Allen, Assistant Director of Child Protection, provided information on the new Children, Youth and Families Amendment (Permanent Care and Other Matters) Bill, and the implications and changes to practice coming in March 2016. Her Honour, Judge Amanda Chambers explained how the changes will impact on court practices and decision making; while Saskia Rijfkgogel, solicitor with Peninsula Community Legal Service, provided information on accessing legal services, legal aid, and representation.

Like last time, the panel took a number of questions from the floor and proved once again to be extremely popular. If you were unable to air your question, we are currently collating questions for the Minister and DHHS and will forward them to the Minister before Christmas.

Please email your questions to: info@pcafamilies.org.au before December 11...

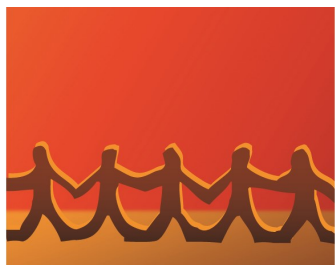


Find us on Facebook — www.facebook.com/pcafamilies

PCA Families now has a Facebook community page which can be found at the above location for details about our support services, training, events, workshops, member stories, industry developments and the like.

Find us on 





TREE OF LIFE — Melbourne Cup Weekend Workshop

The *Tree of Life* program is a new narrative group activity run by PCA Families that is designed for children and young people who are connected through adoption and permanent care. It was successfully held over the Melbourne Cup weekend for a group of young intercountry adoptees from Thailand, who were all members of the Sanuk Club. This new program for PCA Families is designed to encourage children and young people to engage in a group-based program, with others around their lived experience using a child focused, strengths-based approach and it was extremely well-received.

The metaphor of a tree is used as the framework to assist children and young people to explore and speak about aspects of their lives, and to give them a safe territory of identity in which to stand before speaking of difficulties in their lives. It also enables them to develop a 'second story' in a fun and creative way. It can also be rather empowering as the children can come up with their own solution to life's storms, and many also share their knowledge with what they have learnt.



ACTING 101 Workshop with Ra Chapman



With the support and expertise of Ra Chapman, we ran a very successful drama workshop for adopted and permanent care children.

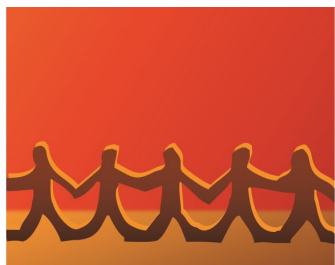
The day was split in two with the 10 and 11 year olds attending in the morning and the 12 plus age group taking the afternoon shift!

We had sixteen children in total and they impressed us with their improvisation and sense of fun!

The children relaxed and participated positively in all the activities. These included relaxation exercises, fun games and some great improvisations. There was a great deal of laughter and chatting among the children during the sessions and one of the best activities was the improvisation sessions. The children were extremely creative and with the assistance of some props and a very old dial telephone the scene was set. The telephone was greeted with some disbelief and amazement.

The venue, 16th Street Theatre added to the children's enjoyment and gave them a genuine theatrical experience. Ra, an adoptee herself, created a safe and comfortable setting which engaged the children. One of the best activities was where the children described a special place that they felt comfortable and safe; we were all transported to their safe place and you could truly imagine being there.





WELCOME TO HOLLAND by Emily Perl Kingsley

I am often asked to describe the experience of raising a child with a disability — to try to help people who have not shared that unique experience to understand it, to imagine how it would feel. It's like this...

When you're going to have a baby, it's like planning a fabulous vacation trip — to Italy. You buy a bunch of guide books and make your wonderful plans. The Coliseum. The Michelangelo David. The gondolas in Venice. You may learn some handy phrases in Italian. It's all very exciting.

After months of eager anticipation, the day finally arrives. You pack your bags and off you go. Several hours later, the plane lands. The stewardess comes in and says, "Welcome to Holland."

"Holland?!?" you say. "What do you mean Holland?? I signed up for Italy! I'm supposed to be in Italy. All my life I've dreamed of going to Italy."

But there's been a change in the flight plan. They've landed in Holland and there you must stay.

The important thing is that they haven't taken you to a horrible, disgusting, filthy place, full of pestilence, famine and disease. It's just a different place.

So you must go out and buy new guide books. And you must learn a whole new language.... and you will meet a whole new group of people you would never have met.

It's just a different place. It's slower-paced than Italy, less flashy than Italy. But after you've been there for a while and you catch your breath, you look around... and you begin to notice that Holland has windmills... and Holland has tulips. Holland even has Rembrandts.

But everyone you know is busy coming and going from Italy... and they're all bragging about what a wonderful time they had there. And for the rest of your life, you will say "Yes, that's where I was supposed to go. That's what I had planned."

And the pain of that will never, ever, ever, ever go away... because the loss of that dream is a very very significant loss.

But... if you spend your life mourning the fact that you didn't get to Italy, you may never be free to enjoy the very special, the very lovely things ... about Holland.

©1987. Emily Perl Kingsley. All rights reserved.

Book Store and Library CLOSING DOWN SALE

As book prices and postage are continually increasing, it is very difficult to compete against the big book sellers so it is with much reluctance that we are closing the bookstore.

What we will have is a list of recommended reading sorted into categories to assist you with selecting books .

What this means: **you win** as we are selling all our stock at reduced prices. Books will be discounted between 10—50% off based on condition and demand.

Some books are brand new whilst others have been for lending. The sale begins on Tuesday Dec 01 and finishes at the end of March 2016.