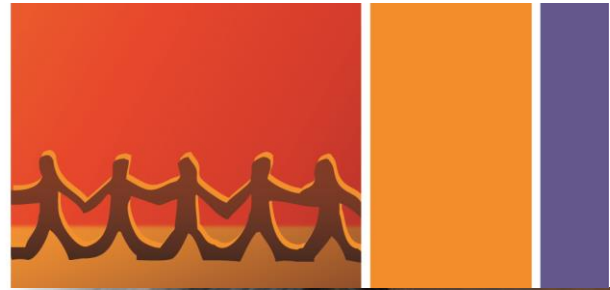


# Permanent Care and Adoptive Families



## Information for New Permanent Care Parents

Permanent Care and Adoptive Families (PCA Families) is a not-for-profit community organisation representing families formed by permanent care, including kinship care, and adoption in Victoria. Established by parents from this community in 2003, we continue to be guided by the lived experience of our members. We take a child-centred and family-focussed approach to supporting strong and stable families.

Every child deserves a family that loves and supports them. Trauma, grief, loss and attachment are issues all permanent care and adoptive families face. Our families are committed to helping their children thrive and so are we.

As the go to organisation for the community, Permanent Care and Adoptive Families delivers peer support, therapeutic programs and advocacy informed by strong lived experience and research.



### Join our Peer Support Program

We offer peer support groups to all permanent care and adoptive parents, including prospective parents. Peer support is an integral part of all our programs and includes support groups, family activities, playgroups, education and training.

Peer support provides an opportunity to build connections with other parents who have similar life and family experiences. It also provides an avenue to share learning about the challenges and joys of parenting children through alternative pathways. Finally, peer support enables access to information and education that is credible, trustworthy and non-judgemental.

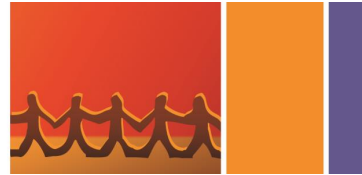


### Helpline

Our Helpline offers families information, support and referrals to other services. We offer support and reassurance with a strong understanding of your experience. You can call us for help to:

- Understand trauma-informed parenting and developmental, behavioural and attachment challenges
- Build and maintain relationships between you, your child and their family-of-origin
- Manage key transition points in your child's life such as the adolescent years
- Improve family relationships, dynamics and communication
- Meet your child's cultural and identity needs
- Access key documents such as birth certificates and passports
- Navigate systems such as Centrelink and DHHS.

There are also resources and fact sheets that you may find useful are available at [www.pcafamilies.org.au](http://www.pcafamilies.org.au).



## Flexible Funding

At the final case plan meeting with DHHS Child Protection, the case planner will make a decision about the funding of any needs that the child or young person joining your family is likely to require for the period after the permanent care order is made (i.e. for around the following 12-24 months).

After that time as unanticipated issues arise, families can access Flexible Funding through PCA Families. The Flexible Funding program is supported by an Alliance with members from OzChild, Victorian Aboriginal Child Care Agency (VACCA), the Foster Care Association of Victoria, Kinship Carers Victoria, Mirabel Foundation and Create Foundation.

This program is available to support families with a:

- Permanent Care Order (PCO)
- Family Law Court Order  
(if you receive DHHS Care Allowance)
- Special Needs Adoption  
(if you receive DHHS Care Allowance)

We prioritise funding to families where there is a risk to placement stability and safety issues. We also have dedicated Flexible Funding for Aboriginal children and families.

## What can I apply for?

Flexible Funding applications can be made to meet the direct needs of the child or young person in your family, or to support the placement. Flexible funding can be used in many ways, including:

- To access health and wellbeing services
- To support and strengthen relationships with peers and family
- To provide opportunities for children and young people to develop their skills and interests.

### Funding is only available for:

- costs above or beyond what the DHHS Care Allowance covers
- costs not funded by other community funding options (e.g. NDIS, Mental Health Care Plan).

## How to apply

Visit [www.pcafamilies.org.au/flexible-funding](http://www.pcafamilies.org.au/flexible-funding)

## Become a Member Now – IT'S FREE!

Become a member of our permanent care and adoption community and receive our quarterly newsletter, other important information and invitations to events.

The membership form can be found on our website or you can email us at [info@pcafamilies.org.au](mailto:info@pcafamilies.org.au).

## We'd love to hear from you

[www.pcafamilies.org.au](http://www.pcafamilies.org.au)

(03) 9020 1833



Helpline:  
[info@pcafamilies.org.au](mailto:info@pcafamilies.org.au)

OR



Flexible Funding:  
[flexifunding@pcafamilies.org.au](mailto:flexifunding@pcafamilies.org.au)



[www.facebook.com/pcafamilies](http://www.facebook.com/pcafamilies)